

# CONSTRUCTION OF TIMBER FRAME HOUSES


The logo for STRÚKTÚR features the word in a bold, black, sans-serif font. The letter 'R' is highlighted in red. The text is overlaid on a background of a grid of thin lines, with some lines in red and others in grey, creating a geometric pattern.

**STRÚKTÚR**



**Timber  
Frame  
Zone**

 [www.struktur.is](http://www.struktur.is)

 +354 588 6640

 [struktur@struktur.is](mailto:struktur@struktur.is)



# ABOUT US

**TIMBER FRAME ZONE** offers a wide range of timber frame house construction at all stages.

The team has experience in this field for more than 15 years. We have been active in the market of Sweden, Norway, France, Estonia and Latvia.

With time and experience, technology and quality control, we are able to offer our customers a quality product that is manufactured in our own production that is located in Latvia, Riga.

## INDIVIDUAL PROJECT

If you have a vision of your dream house, our designers will be able to convert it into your personal project, considering your vision, wishes and budget. Our team will be pleased to offer support and advice.

## READY PROJECTS

We also offer an existing catalogue - a collection of ready-made house plans for every taste. In these projects, we took into account all needs of clients, and combined all the functions necessary for everyday life.





# RESIDENTIAL HOUSE "MERCURY"



## TURNKEY HOUSE

Verð frá kr. 15.300.000,-  
á hafnarbakka Rvk.

**TOTAL AREA- 44 M2**  
H 3M \* L 12.5 \* W 4 M

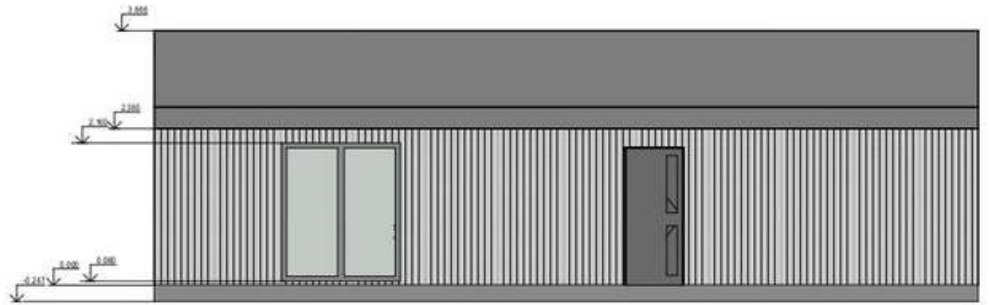
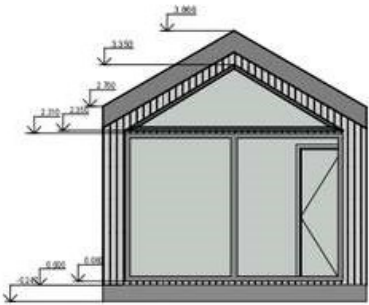
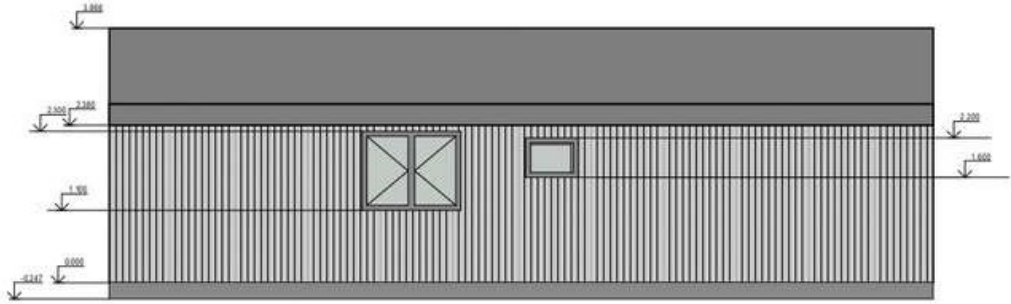
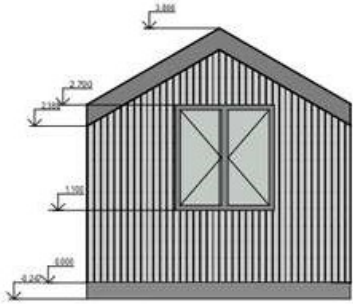
### Price includes:

- Full internal and exterior finish
- Metal roof
- Kitchen unit
- Creation of engineering networks
- Sanitary unit
- Water and sewer outlet

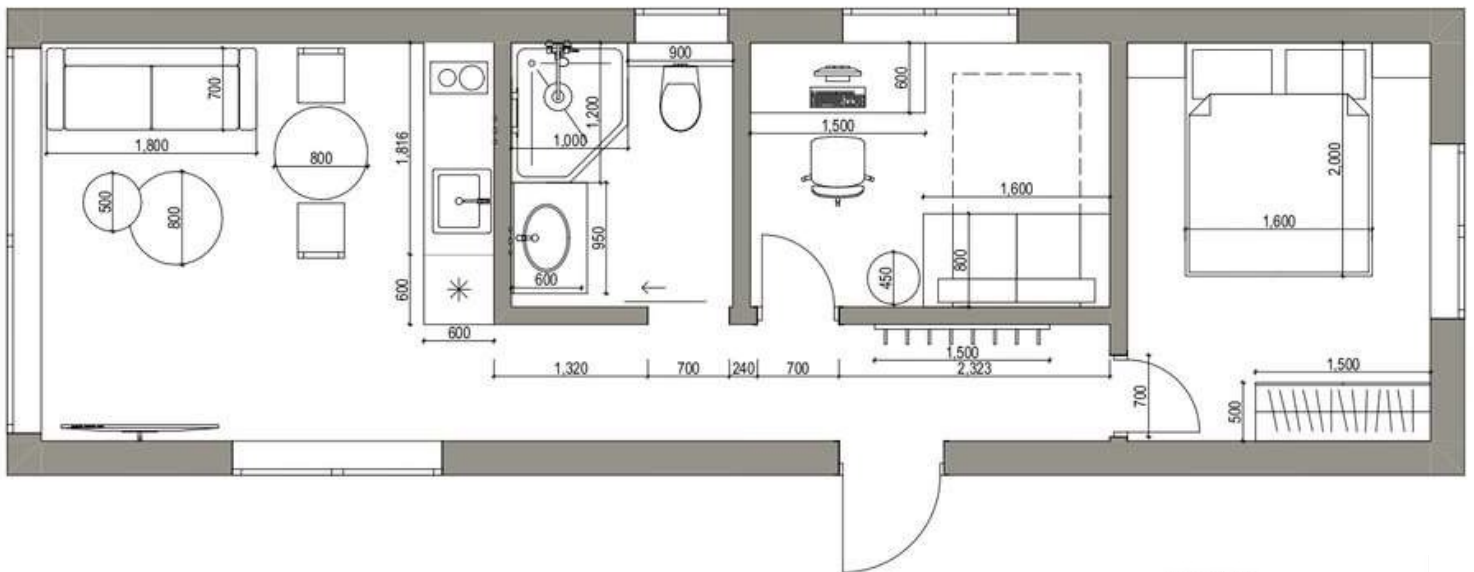


BUILDING A BETTER FUTURE

# RESIDENTIAL HOUSE "MERCURY"



Projekt: MERCURY  
 Drawing name: FACADE  
 Scale: 1:100      Date



Projekt: MERCURY  
 Drawing name: FURNITURE PLAN  
 Scale: 1:50      Date



# RESIDENTIAL HOUSE "MERCURY"





# RESIDENTIAL HOUSE "NEPTUN"



**TURNKEY HOUSE**

**Verð frá kr. 6.800.000,-  
á hafnarbakka Rvk.**

**TOTAL AREA - 15.6 M2**

**H 3M \* L 6.4 \* W 3.3 M**

**+ 0.7 M ROOF CANOPY**

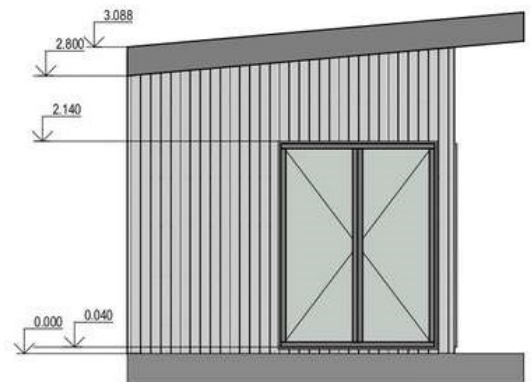
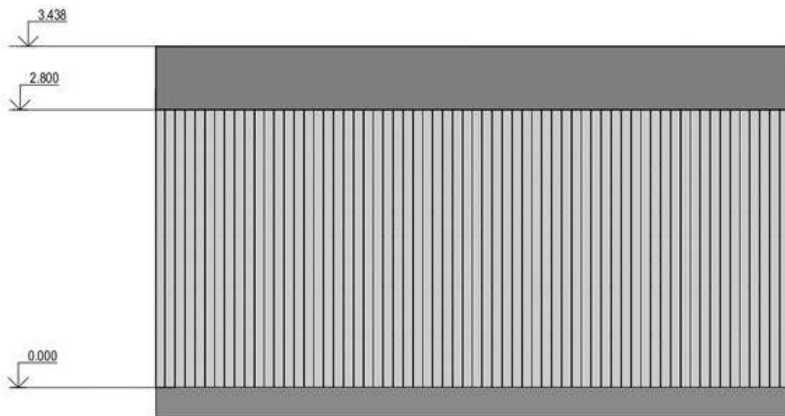
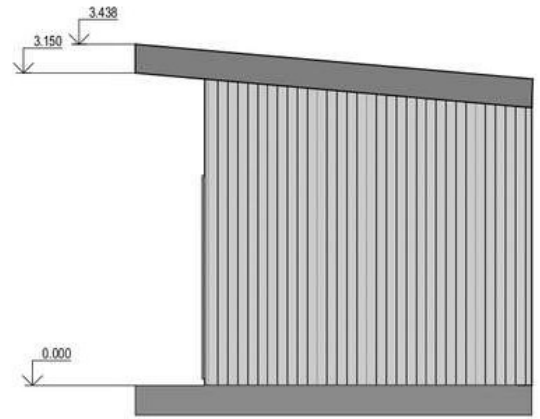
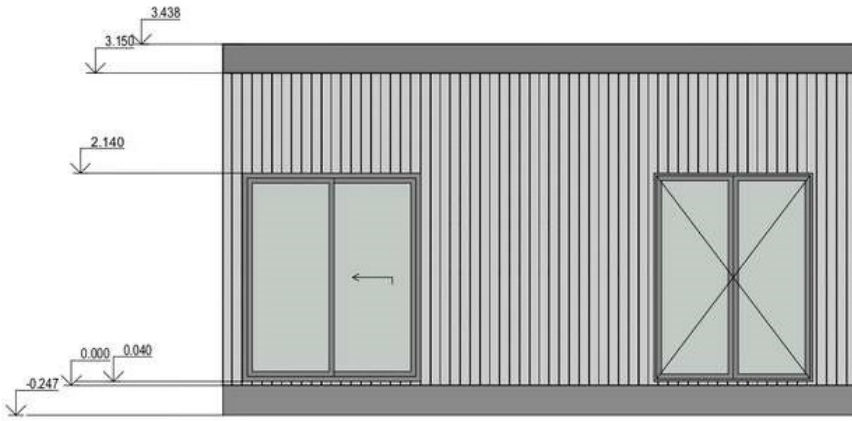
## **Price includes:**

- Full internal and exterior finish
- Metal roof
- Kitchen unit
- Creation of engineering networks
- Sanitary unit
- Water and sewer outlet

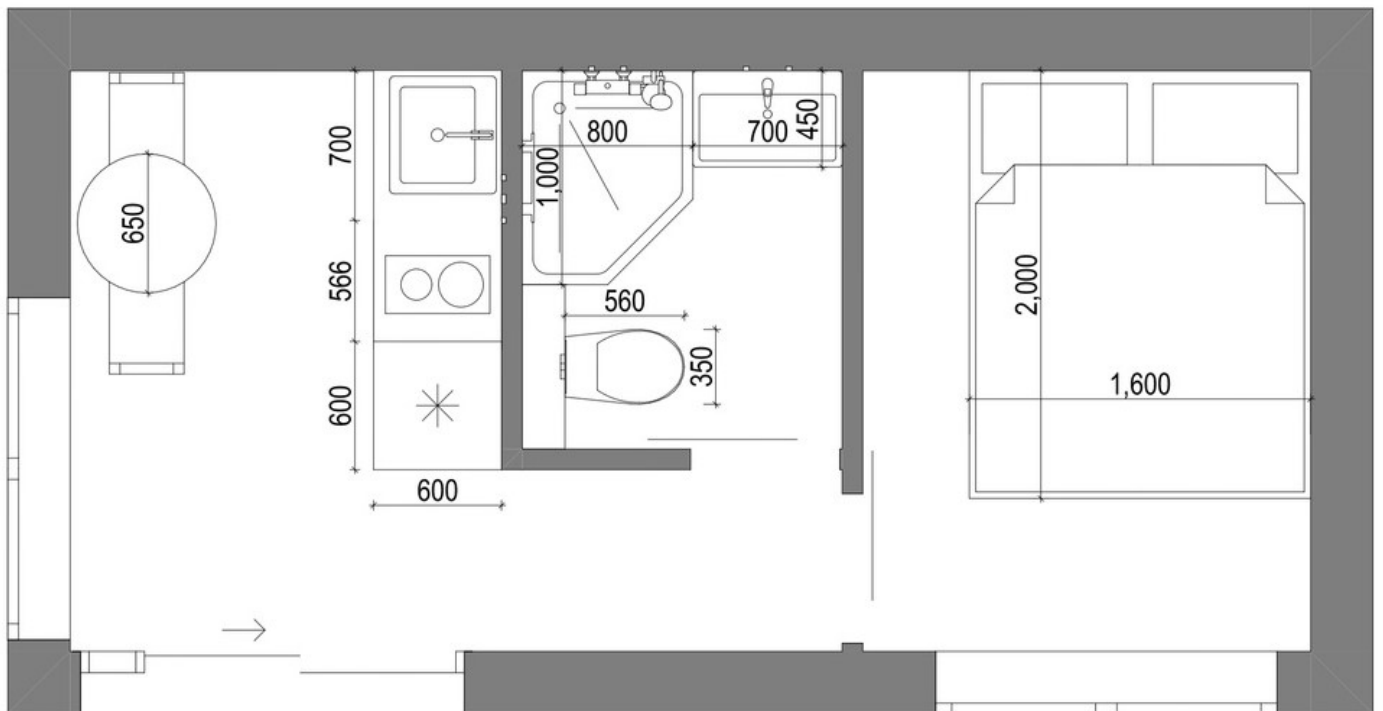


**BUILDING A BETTER FUTURE**

# RESIDENTIAL HOUSE "NEPTUN"



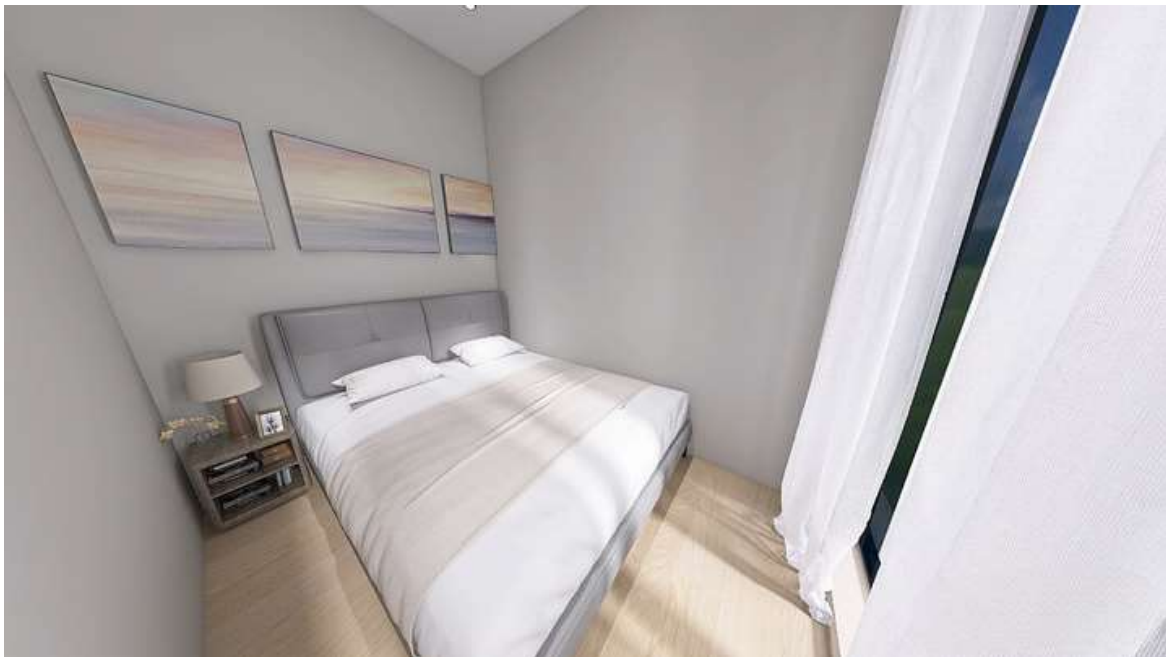
Projekt: NEPTUN  
 Drawing name: Facade  
 Scale: 1:50  
 Date



Projekt: NEPTUN  
 Drawing name: FURNITURE PLAN  
 Scale: 1:20  
 Date



# RESIDENTIAL HOUSE "NEPTUN"





# RESIDENTIAL HOUSE "MARS"

## TURNKEY HOUSE

Verð frá kr. 9.250.000,-  
á hafnarbakka Rvk.

**TOTAL AREA- 23 M2**

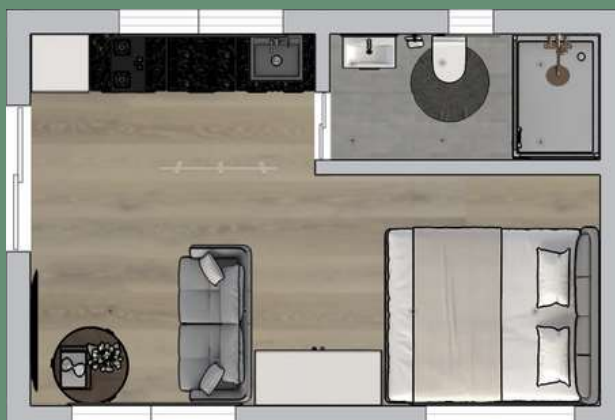
H 3M \* L 6 \* W 4 M

### Price includes:

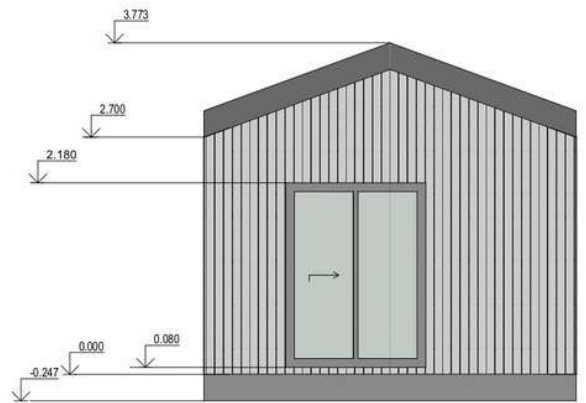
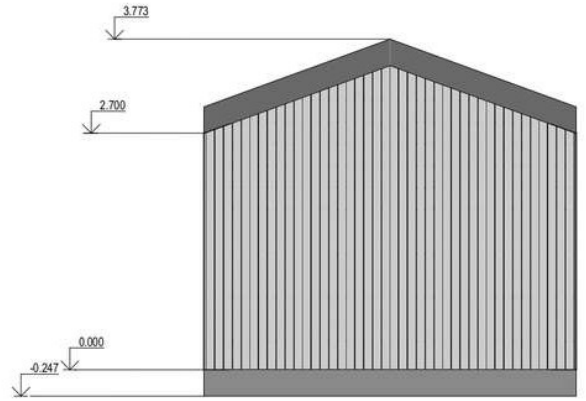
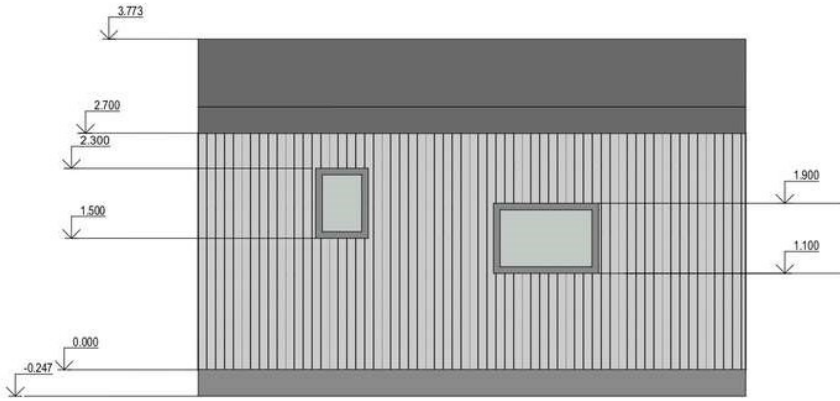
- Full internal and exterior finish
- Metal roof
- Kitchen unit
- Creation of engineering networks
- Sanitary unit
- Sanitary unit
- Water and sewer outlet



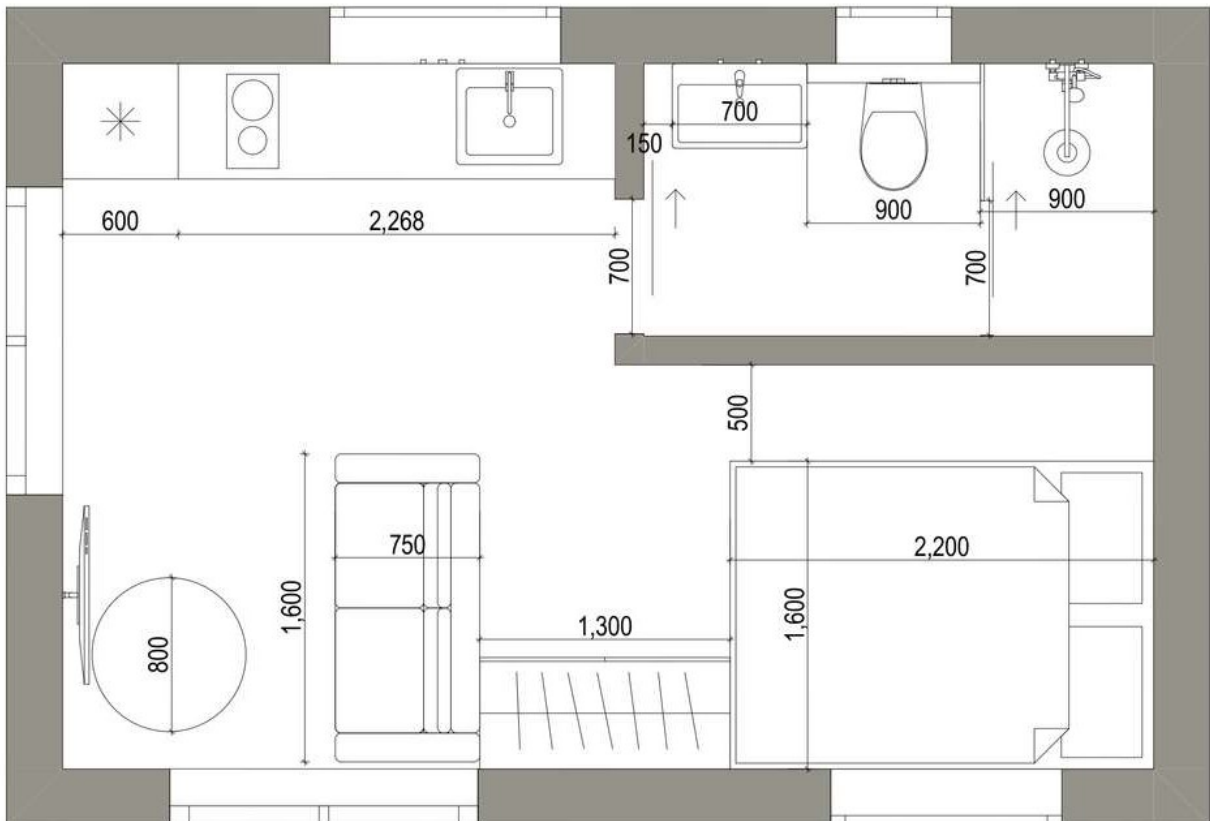
BUILDING A BETTER FUTURE



# RESIDENTIAL HOUSE "MARS"



Projekt: Mars  
 Drawing name: FACADE  
 Scale: 1:50      Date

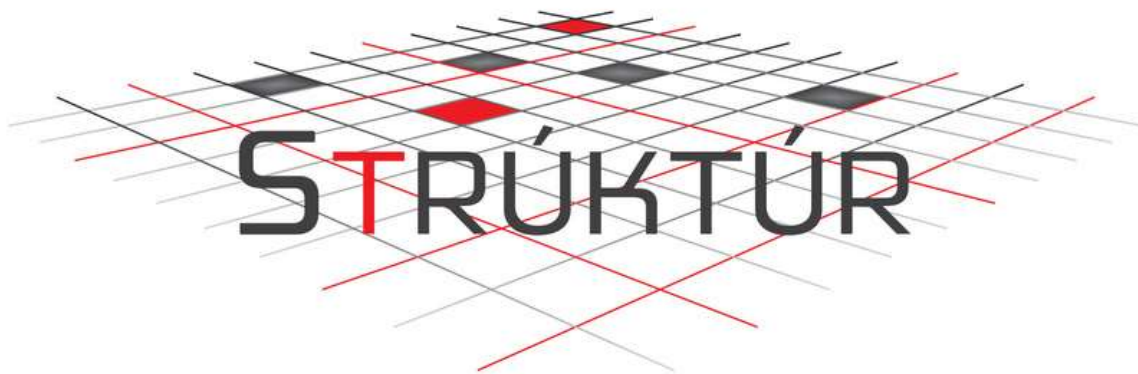


Projekt: Mars  
 Drawing name: Furniture plan  
 Scale: 1:20      Date



# RESIDENTIAL HOUSE "MARS"





**BUILDING A BETTER FUTURE**

**Bæjarflöt 9, 112 Reykjavík**  
**struktur@struktur.is**  
**www.struktur.is**  
**+354 588 6640**