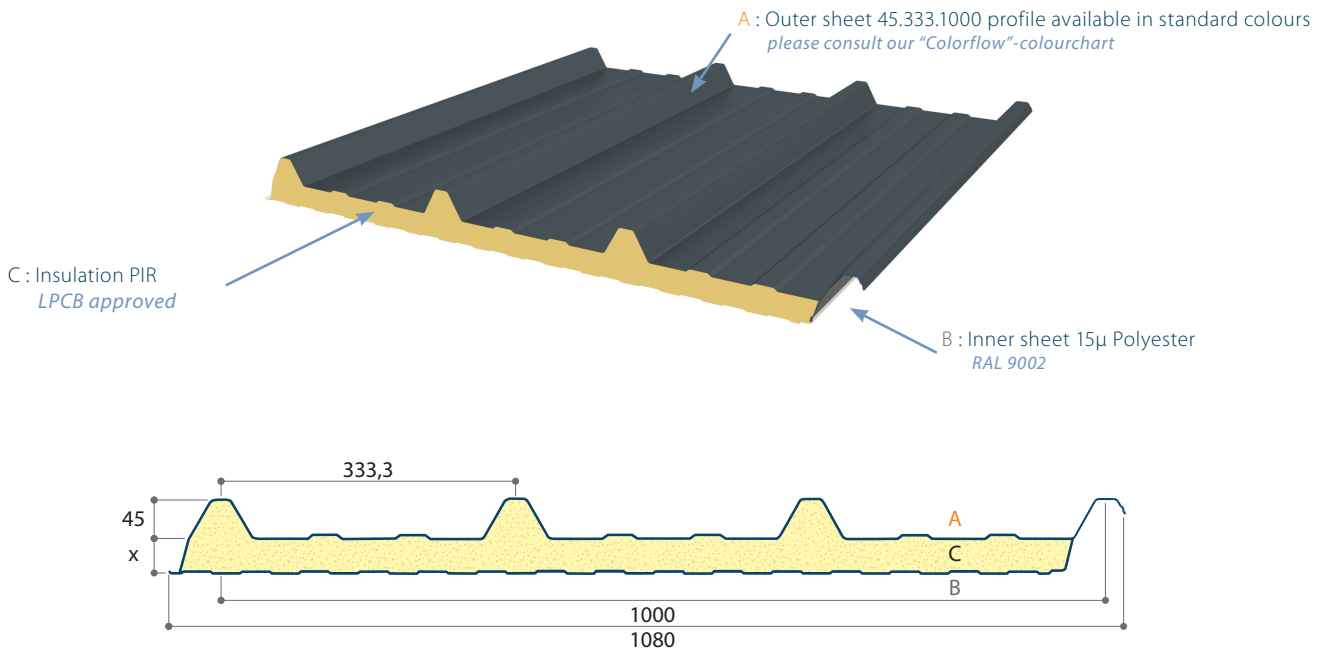


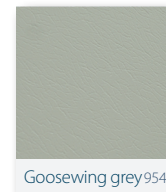
Discover the **JI ROOF 1000** insulated panels

Insulated panel used for pitched roofs or horizontal and vertical wall application. The minimum pitch to be applied is 4° or more after deflection. This panel can be used for industrial, commercial and public buildings.



Directly available from stock

Core thickness (mm)	Colour	Lengths in stock (mm)
40	C200 Goosewing Grey	3075 (CB 75 mm L-R)
40	C200 Goosewing Grey	4075 (CB 75 mm L-R)
40	C200 Goosewing Grey	5075 (CB 75 mm L-R)
40	C200 Juniper Green	3075 (CB 75 mm L-R)
40	C200 Juniper Green	3575 (CB 75 mm L-R)

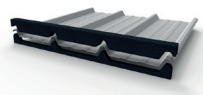
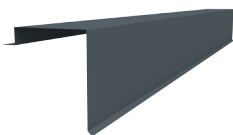


System key benefits

- applicable as roof and wall panel for renovations and new buildings
- easy handling, mounting and fitting
- composite panel allows a faster installation time than standard built-up systems
- the JI Roof 1000 is CE-marked
- approved product by LPCB (Loss Prevention Certification Board) (40 to 150 mm core thickness)
- high thermal performance PIR foam
- inner sheet comes as standard in 15 µ Polyester with a RAL 9002 colour
- JI Roof 1000 PIR comes standard with a factory applied seal on the side lap
- integrated insulated polycarbonate roof lights are available
- matching single skin profiles in metal or polycarbonate are available

Available accessories

- flashings
- foam fillers
- rooflights
- sealants
- mastics
- fixings



Weight and thermal performance

Core thickness (mm)	40	60	80	100	120	150
Overall thickness (mm)	85	105	125	145	165	195
U-value (W/m ² K)	0,46	0,35	0,25	0,20	0,16	0,14
Weight (Kg/m ²)	11,71	12,51	13,30	14,10	14,89	16,09

U-values are calculated in accordance with the method required by Part L2 (England and Wales) Building Regulations and Section 6 (Scotland) Technical Hand

Available coatings

Coating	Colour
Plastisol C200 Leathergrain	Goosewing Grey, Merlin Grey, Juniper Green, Slate Blue
Plastisol HPS200	Standard colours, please consult our "Colorflow"-colourchart for details.
Polyester 25 µm	Standard colours, please consult our "Colorflow"-colourchart for details.
Ultra 60 µm	Standard colours, please consult our "Colorflow"-colourchart for details.
Prisma 50 µm	RAL 9006, RAL 9007

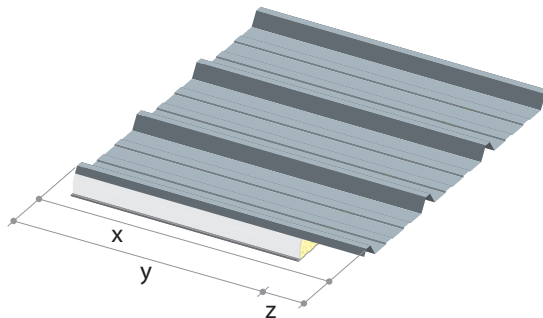
Minimum length

Please specify insulation length (x) and cutback (z).

Cutback: min. 50 mm, max. 350 mm.

Minimum insulation length to avoid extra costs.

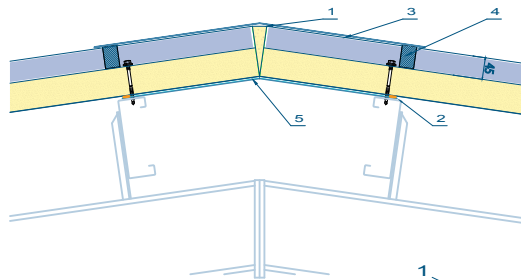
RW 40 mm	=	2000 mm
RW 60 mm	=	1900 mm
RW 80 mm	=	1800 mm
RW 100 mm	=	1800 mm
RW 120 mm	=	1800 mm



Construction details

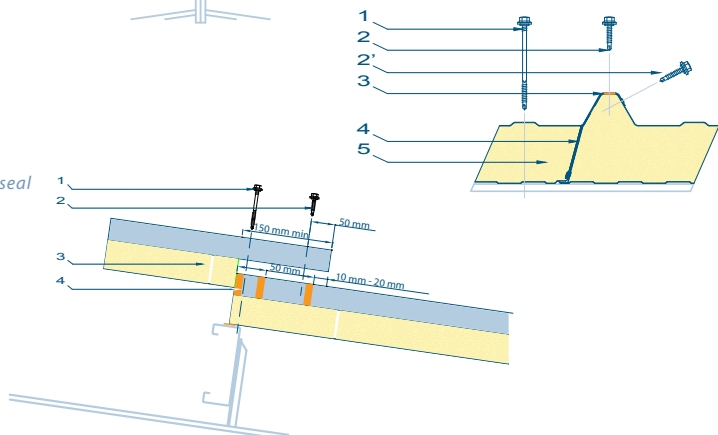
Ridge details

1. Canister applied foam insulation
2. 9 mm x 3 mm butyl seal
3. external flashing
4. profiled filler
5. internal flashing with 150 mm overlap sealed with air seal



Side lap detail

1. main panel fastener in each valley
2. stitcher screw in each crown (max. 450 mm centers)
- 2'. for wall applications
3. butyl rubber sealant (site-applied) and compressible factory applied seal
4. compressible factory applied seal
5. JI Roof 1000 PIR LPCB approved trapezoidal roof panel



Overlap detail

1. main panel fastener in each valley
2. stitcher screw in each crown
3. JI Roof 1000 PIR LPCB approved trapezoidal roof panel
4. butyl rubber sealants

	Pitch (°)	Minimum end lap (mm) *	Butyl side lap	Stitches (mm)	Number of butyl cords end lap
4	≤ p <	200	Yes	450	3
6	≤ p <	150	Yes	450	2
11	≤ p <	150	Yes	450	2
21	≤ p	100	Yes	450	2

* in case of an overlap of two sheets